

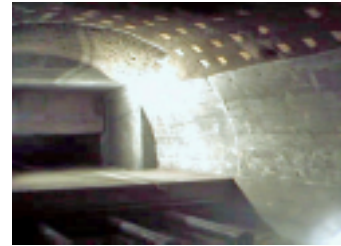
Application Guide

DUAL CHAMBER WASTE INCINERATOR



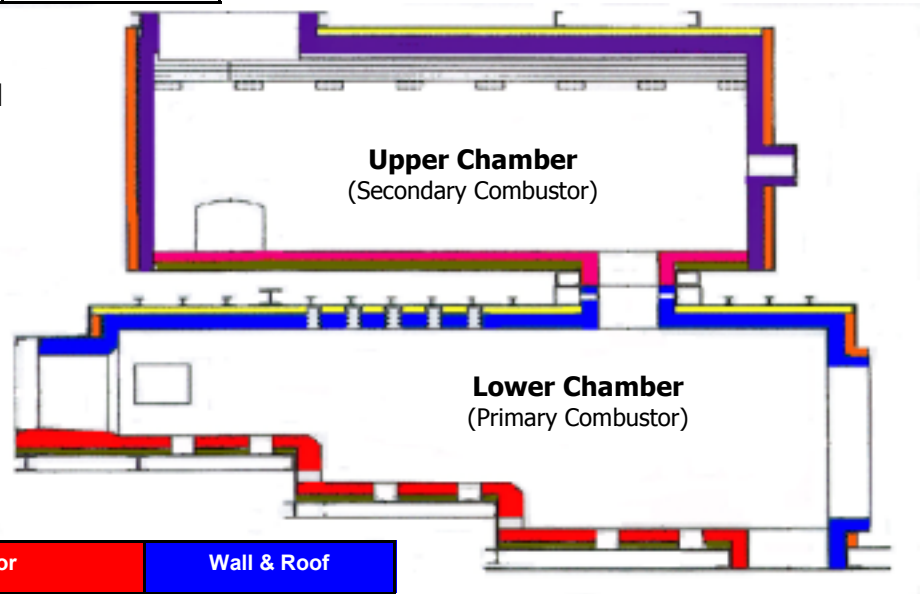
Upper Chamber

	Floor	Wall & Roof
Normal Service	Plicast HyMOR 3000 Plicast Si-BOND SD Plibrico 60 AB	Plibrico 60 AB Plibrico 68 SA Pligun 70
Severe Service	Plicast HyMOR 3100 Plicast Super HyMOR 65 Plicast Si-BOND M	Plibrico 80 AB Plibrico 85 S Special



Typical Bio-Hazard Waste Incinerator Configuration

Insulation
Plisulate 1900 Plicast LWI 24 Pligun LWI 106 Pligun LWI 24



Lower Chamber

	Floor	Wall & Roof
Normal Service	Plicast HyMOR 3000 Plicast Si-BOND SD	Plibrico 60 AB Plibrico 68 SA Pligun 70
Severe Service	Plicast HyMOR 3100 Plicast Super HyMOR 65 Plicast Si-BOND M	Plibrico 80 AB Plibrico 85 S Special Pligun HyMOR 8



Plibrico Company LLC
1010 North Hooker Street
Chicago, Illinois 60622

Tel: 312- 337-9000
Fax: 312- 337-9003

www.plibrico-usa.com

This application guide is intended for general information only. Please consult Plibrico Company or your local Plibrico Representative for specific application assistance and product recommendations.