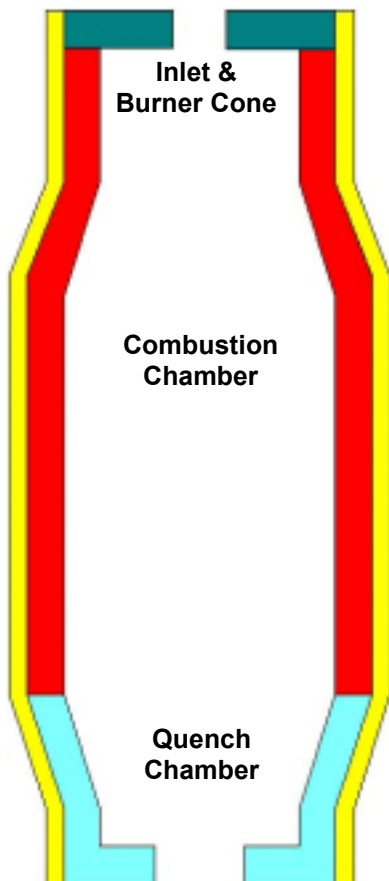


Application Guide



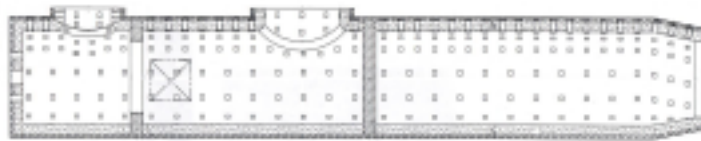
THERMAL OXIDIZERS

	Inlet & Burner Cone	Combustion Chamber	Quench Chamber
<i>Normal Service</i>	Plicast HyMOR 3000 Plibrico Super F AB Plibrico 68S A	Plicast / PligunTuff Mix Pligun 3000 Plibrico Super F AB	Plicast / Pligun Tuff Mix Pligun 3000
<i>High Duty Service</i>	Plicast HyMOR 3100 Special Plibrico 60 AB Plibrico 85 S Special	Plicast HyMOR 3000 Pligun 3100 Special Plibrico 60 AB	Plicast HyMOR 3000 Pligun 3100 Special Pligun HyREZIST TS Mix
<i>Severe Service</i>	Plicast Super HyMOR 80 Plicast Si-BOND B Plibrico 90S	Plicast Super HyMOR 80 Plicast Si-BOND B Pligun HyMOR 8 Plibrico 80 AB	Plicast Super HyMOR 65 Plicast Si-BOND M Pligun HyMOR 8 Plicast HyMOR TSR Plus KK



Insulation (all areas)

Plisulate 1900 Pligun LWI 106 Plicast / Pligun LWI 22



Recuperative Thermal Oxidizer

Plibrico Company LLC
1010 North Hooker Street
Chicago, Illinois 60622

Tel: 312- 337-9000
Fax: 312- 337-9003

www.plibrico-usa.com

This application guide is intended for general information only. Please consult Plibrico Company or your local Plibrico Representative for specific application assistance and product recommendations.